



## Security and arrest mechanisms

SECURE YOUR WORLD



# Company profile



TOKOZ a.s. is a company working in the field of security mechanisms for more than 90 years. Thanks to years of experience we have become real experts on manufacturing of padlocks and today we are the biggest Czech producer in this field.

We have diversified our permanent assortment that includes padlocks and other security components such as bars and hasps or building and furniture hardware and added special security mechanisms and accessories.

It is the area of security mechanisms that we have focused on the most in recent years, and with our new motto

## **„SECURE YOUR WORLD“**

it is your own world we help to secure!

The products you can find in our current offer involve not only the time-proven and in some fields still irreplaceable TOKOZ products, but also new mechanisms that comply with present-day requirements and provide specific solutions.

**WITH EVERY STEP WE MAKE, WE WANT TO KEEP CONTRIBUTING TO OUR GOOD REPUTATION OF A STRONG CZECH MANUFACTURER OF LOCKS AND FITTINGS**

# How to choose the right lock?

To make security orientation easier the products are marked with a security class and a use pictograms.

## Security class

Product	European standard	SECURITY CLASS			
		1	2	3	4
Padlocks	EN 12320	Class 1	Class 2	Class 3	Class 4
Cylinders	EN 1303	key	Class 4	Class 4	Class 6
		breaking	Class 1	Class 1	Class 2
Fillings (doors etc.)	EN 1627	Class 1	Class 2	Class 3	Class 4

All products are categorized into classes according to their breaking and devaluation resistance.

Classes are indicated on all certified products to make the product selection easier.

## Certificates



TOKOZ products are mainly intended for external use since they withstand extreme climatic condition over a long period of time. In support of our claim is also the fact that our products undergo tests in a salt-spray cabinet and conditions the standards for given products severalfold. Detailed information on resistance is given with each product.

Outstanding quality of TOKOZ PRO products is also proved by product certificates from independent accredited testing laboratories.

We use the following accredited testing laboratories to certify our products: SZU Engineering Test Institute, Brno, TREZOR TEST s.r.o., Klecany.

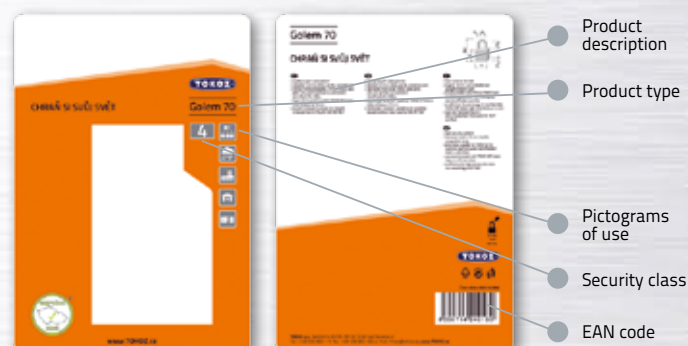
**Our products are certified in accordance with three standards:**

**EN 1627** – defines product resistance to e. g. drilling, lock picking, wrench, bumping, brute force, etc.

**EN 12320** – specifies requirements and describes testing methods for strength, security, functionality and corrosion resistance in padlocks and their accessories

**EN 1303** – this European standard sets forth the requirements and testing methods for classification of cylinders from the functionality and security standpoints

## Packaging





Note: order details are included in the price list

For bulk orders, the packing can be adapted according to customers wish.



# Product list and use

product	product number	page	predominant material	number of keys	security class		master Keyed System	keyed Alike System
					4	3		
								
XSAFETYBOX I	51121	6	ZINC CASTING	3		X	X	X
XSAFETYBOX II	51122	6	ZINC CASTING	3		X	X	X
XSAFETYBOX III	51123	7	ZINC CASTING	3		X	X	X
XSAFETYBOX IV	51143	7	STEEL	3	X		X	X
MOTO 70/1500	24034	8	STEEL	5				X
MOTO 60/1500	29034	8	STEEL	3			X	X
MOTO 50/2000	27932	9	ZINC CASTING	3				X
MOTO 50/1000	27931	9	ZINC CASTING	3				X
CHAIN LOCK	29455	9	STEEL	2				
CHAIN 12x66x2000	24603	10	STEEL					
CHAIN 12x66x1500	24602	10	STEEL					
CHAIN 12x66x1000	24601	10	STEEL					
CHAIN 8x24x2000	25703	10	STEEL					
CHAIN 8x24x1000	25702	10	STEEL					
CHAIN 8x24x700	25701	10	STEEL					
CHAIN 6x18x2000	25503	10	STEEL					
CHAIN 6x18x1000	25502	10	STEEL					
CHAIN 6x18x700	25501	10	STEEL					
CHAIN 12x66x1500 K	24611	10	STEEL					
CHAIN 12x66x1000 K	24610	10	STEEL					
CHAIN 8x24x2000 K	25713	10	STEEL					
CHAIN 8x24x1000 K	25712	10	STEEL					
CHAIN 8x24x700 K	25711	10	STEEL					
CHAIN 6x18x1000 K	25512	11	STEEL					
CHAIN 6x18x700 K	25511	11	STEEL					
CABLE LOCK	29456	12	STEEL	2				
COMBINATION CABLE LOCK	29457	12	STEEL					
ALARM DISC LOCK	29453	12	ZINC CASTING	2				
KONTI 9	28831	13	ZINC CASTING				X	
KONTI 9 PRO	23411	13	ZINC CASTING				X	
KONTI 12	28832	13	ZINC CASTING				X	
KONTI 12 PRO	23401	13	ZINC CASTING				X	
US 250 I	29131	14	STEEL					
US 250 II	29132	15	STEEL					
US 250 KASI	29133	15	STEEL					
US 250 REXEL	29134	15	STEEL					
US 260 – SECURITY SCREW	29150	16	STAINLESS STEEL					
US 260 – SECURITY SCREW WITH CHEMICAL ANCHOR HOUSING	29160	16	STAINLESS STEEL					
SECURITY ACCUMULATOR BOX	53401	17	STEEL PLATE					
WINDOW SPACER WHITE	917101	18	ZINC, STEEL					
WINDOW SPACER BROWN	917108	18	ZINC, STEEL					
WINDOW SPACER WHITE WITH SAFETY CATCH	45201	18	ZINC, STEEL					
WINDOW SPACER BROWN WITH SAFETY CATCH	45203	18	ZINC, STEEL					
LOCKABLE WINDOW SPACER BROWN	44303	18	ZINC, STEEL	2				X
LOCKABLE WINDOW SPACER WHITE	44301	19	ZINC, STEEL	2				X
LOCKABLE WINDOW SPACER FOR ROOF WINDOWS	44311	19	ZINC, STEEL	2				X
FLANGE POST DZ WITHOUT SURFACE FINISHING	10200	20	ALUMINIUM CASTING					
FLANGE POST FLANGE DZ GREEN	10206	20	ALUMINIUM CASTING					
FLANGE POST FLANGE DZ RED	10207	20	ALUMINIUM CASTING					
FLANGE POST DZ YELLOW	10208	20	ALUMINIUM CASTING					
FLANGE POST DZ BLACK	10209	20	ALUMINIUM CASTING					
ANCHORING FOR FLANGE POST DZ	10205	20	STEEL					

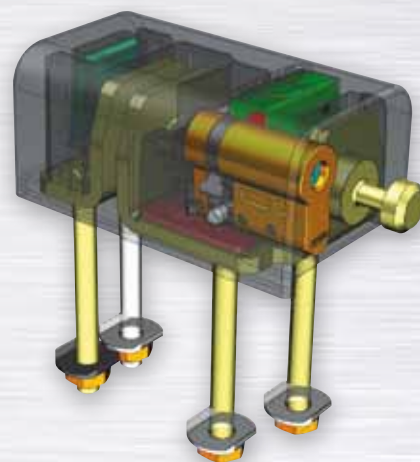


# X SAFETY BOX

## STOP THE THIEVES

### Guarantees your peaceful sleep

X SAFETY BOX I and X SAFETY BOX II are intended for double or single doors and are replacing the traditional padlock combined with hasps or bars. It is an innovated version of TOKOZ bars. Their big asset is the simplicity of control. The door opens with one swift movement of the key and everything remains on the door. No padlock or other element impedes your hands. X SAFETY BOX III and X SAFETY BOX IV are anchoring systems to firm bases to secure free-standing objects.



- > standardly supplied with the TOKOZ PRO single cylinder corresponding with the security class of the product itself
- > easy to exchange single cylinders with dimension 27 - 33 (FAB, GUARD, ASSA ABLOY, MUL-T-LOCK, EVVA, etc.), can also be delivered without the cylinders
- > possibility of integration with keyed alike, master keyed and general master keyed systems and interconnection with cylinders as well
- > standardly delivered with single cylinders that correspond with the safety level of the product itself
- > can be fasten to various places: screwed on wooden or metal doors or welded to metal surfaces
- > high security class due to covered pin
- > chrome-manganese steel pin, hardened and corrosion resistant (ion nitration) surface

- > massive cast zinc X SAFETY BOX I, II, III body is resistant to brute force and destruction
- > base plates are from weldable steel with hardened surface (cementation), surface finish - zinc-blue chrome
- > X SAFETY BOX IV body is made of chromium manganese hardened steel resistant to extreme brute force
- > special anchors that make it impossible to wrench the base from the ground are part of packaging
- > X SAFETY BOX III also offers chains and cables of various sizes
- > for X SAFETY BOX IV, you need to make an additional purchase of a chain we are offering various sizes
- > delivered with three keys

X SAFETY BOX is protected as a Utility Model no. 18557







51123

X SAFETY BOX III

3



51143

X SAFETY BOX IV

4



X SAFETY BOX III without a chain – 51114  
 X SAFETY BOX III with chain  $\varnothing$  8 mm, 1 m – 51123  
 2 m/ $\varnothing$  8 mm hardened chain for X safety BOX III – 51191  
 3 m/ $\varnothing$  8 mm hardened chain for X safety BOX III – 51192  
 5 m/ $\varnothing$  5 mm cable for X SAFETY BOX III - 25930  
 10 m/ $\varnothing$  5 mm cable for X Safety BOX III - 25931  
 15 m/ $\varnothing$  5 mm cable for X SAFETY BOX III - 25932

X SAFETY BOX IV – 51143  
 1 m/ $\varnothing$  13 mm hardened chain for X safety BOX IV – 25941  
 2 m/ $\varnothing$  13 mm hardened chain for X safety BOX IV – 25942  
 3 m/ $\varnothing$  13 mm hardened chain for X safety BOX IV – 25943

	X SAFETY BOX I	X SAFETY BOX II	X SAFETY BOX III	X SAFETY BOX IV
Zinc casting	x	x	x	
Steel				x
Resistance to corrosion	in compliance with the standard	in compliance with the standard	in compliance with the standard	in compliance with the standard
Number of keys	3	3	3	3
Identification card	x	x	x	x
Packaging	box	box	box	box
Quantity per package	1	1	1	1
Weight in kg	2,70	1,80	4,10	3,00



## Think about your motorbikes !

TOKOZ MOTO locks are the best security products for motorbikes, quad bikes and other vehicles. The chain locks are available in various sizes, made of the high quality materials, most predominantly of hardened steel. A single key unification (e.g. your garage door key) is possible in some locks and the others have lockable systems specifically developed for extreme weather conditions (dust, sand, cold, water).



- > MOTO 70 and 50 – mechanism locked by rotating discs, is resistant to bumping, lock picking and drilling and provides reliability in case of extreme climatic conditions and can be united into Keyed Alike systems
- > MOTO 60 comes with a cylinder resistant to drilling and hook picking and can be integrated with keyed alike, master keyed and general master keyed systems and interconnected with cylinders as well



- > chains are made of hardened steel resistant to sawing and cutting.
- > black textile sleeve protects locked objects against damage
- > chains are available in various sizes
- > all padlocks are certified: Golem 70 security class 4, Golem G 60 security class 4 and PLUTO 50 security class 3
- > Chain lock with direct locking of the chain into the body of the lock



STOP  THE THIEVES



27932  
MOTO 50/2000

27931  
MOTO 50/1000



29455  
Chain lock



	MOTO 70/1500 (GOLEM 70 )	MOTO 60/1500 (GOLEM 60)	MOTO 50/1000 (PLUTO 50)	MOTO 50/2000 (PLUTO 50)	Chain lock
Chain	ø 12 mm/1,5 m	ø 10 mm/ 1,5m	ø 8 mm/1 m	ø 8 mm/2 m	ø 10 mm/2 m
Resistance to corrosion	3 times higher than prescribed by the standard	in compliance with the standard	in compliance with the standard	in compliance with the standard	in compliance with the standard
Number of keys	5	3	3	3	2
Identification card/ plate	plate	card	plate	plate	card
Packaging	without package	without package	without package	without package	without package
Quantity	1	1	1	1	1
Weight in kg	5,00	3,40	1,80	2,50	4,30

# Chains

## **We also supply chains to TOKOZ products**

We deliver chains in three types of thickness, length  
and with the possibility of textile sleeve.

Chain 12x66x2000



Chain 8x24x2000



Chain 6x18x2000



Chain 12x66x2000 with sleeve



Chain 8x24x2000 with sleeve



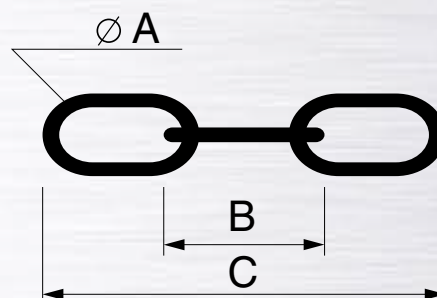




## Chain 6x18x2000 with sleeve



- > hardened steel chains with an eye diameter of 12 mm, 8 mm and 6 mm come various lengths
- > scratch protection of locked objects by textile sleeve available
- > textile sleeve may be ordered separately, without the chain (order number available upon request)



Product number	Name of the product	A	B	C	Quantity per package	Weight in kg
24603	chain 12x66x2000	12	66	2000	1	4,90
24602	chain 12x66x1500	12	66	1500	1	3,70
24601	chain 12x66x1000	12	66	1000	1	2,60
25703	chain 8x24x2000	8	24	2000	1	2,70
25702	chain 8x24x1000	8	24	1000	1	1,40
25701	chain 8x24x700	8	24	700	1	0,90
25503	chain 6x18x2000	6	18	2000	1	1,50
25502	chain 6x18x1000	6	18	1000	1	0,70
25501	chain 6x18x700	6	18	700	1	0,50
24611	chain 12x66x1500 K	12	66	1500	1	3,70
24610	chain 12x66x1000 K	12	66	1000	1	2,50
25713	chain 8x24x2000 K	8	24	2000	1	2,90
25712	chain 8x24x1000 K	8	24	1000	1	1,50
25711	chain 8x24x700 K	8	24	700	1	0,90
25512	chain 6x18x1000 K	6	18	1500	1	0,80
25511	chain 6x18x700 K	6	18	700	1	0,60

# Disc lock, Cable lock, Combination cable lock



## Compact and lightweight options for securing your motorbike, scooter or bicycle

New variants of locks will solve your problems with constant lack of space and excessive weight



**29456**

### Cable lock



> Steel cable protected by plastic coat to hinder sawing and cutting

> Combination cable lock – lock can be recoded according to the instructions on the packaging



**29457**

### Combination cable lock

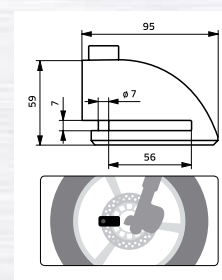


**29453**

### Alarm disc lock



> We offer the disc lock in 4 colour variants



	Alarm disc lock	Cable lock	Combination cable lock
Cable		ø 20 mm / 1 m	ø 12 mm / 1 m
Material	zinc casting	steel	steel
Number of keys	2	2	
Identification card / plate	blister	card	card
Package	without package	without package	without package
Number of pieces in package	1	1	1
Weight kg	0,55	0,80	0,38



# Konti

## Used for locking containers, trash cans attics and cellars.

Security lock KONTI was manufactured to keep containers and dustbins, safe from unauthorized litter. This is the most used alternative but it can also be used as **an anchor system for free-standing objects** or an additional lock for attic and basement areas.



**28831**  
Konti 9

**23411**  
Konti PRO 9



- > lock body made of zinc alloy is more resistant to forced attack
- > steel chain extremely resistant to wrenching, 9 or 12 chain links
- > possibility of locking even without the key



**28832**  
Konti 12

**23401**  
Konti PRO 12



- > surface finishing: varnished body, galvanized chain
- > KONTI can be integrated with Master Keyed systems
- > supplied with fasteners
- > may be supplied in a version without a lock cylinder, 234111 Konti 9, 234011 Konti 12
- > newly supplied even with the TOKOZ PRO system, possibility of integration to keyed alike, master keyed and grand master keyed systems with TOKOZ PRO products
- > a product with this lock cylinder is highly resistant to lock picking and bumping

	KONTI 9 / KONTI PRO 9	KONTI 12 / KONTI PRO 12
Resistance to corrosion	2 times greater than prescribed by the standard	2 times greater than prescribed by the standard
Number of keys	2	2
Bulk packaging	box	box
Number of pieces in a bulk package	10	10
Weight of bulk package in kg	8,90	9,10

# US 250



## Specially developed for securing manholes and underground shafts

### It solves the following problems:

- > theft of the covers and other displays of vandalism
- > unauthorized entries into the city underground
- > security of gates, grilles and special entrances
- > spontaneous bumps of the covers caused by the pressure of large vehicles
- > reduces noisiness and clattering of covers while crossing
- > prolongs lifespan of covers
- > protects people from falling into open shafts and protects cars from damaging
- > protects covers against wrenching and extraction
- > protection during flooding against unhinging of covers
- > secures entrance for authorized personnel, even in extreme climatic conditions (dust, freezing temperatures, snow, etc.)
- > protection of shafts and manholes against explosives and terrorist attacks (airports, town squares, football stadiums, etc.)
- > decreases the need for police or service inspection at dangerous or public places

US 250 is a lock that you **attach to the inside of the cover, gate, door or grilles** and it becomes inaccessible by ordinary tools. To operate the lock into locked or unlocked state, use a special key (a control peg) that can be manufactured according to requirements of the customer. Operating the key (the peg) is user friendly. The key (the peg) is put on the valve and pushed down with the force of 300N then 90° clock-wise turn to the first position or 180° turn to the second locking position. After the key (the peg) is pulled out the lock always secures itself against coincidental turning and unlocking.



29131

### US 250 – Cover Type I

It is intended for conical covers with oblique bottom.

- > 6x spacer ring – pipe PPR-PN Ø 25/ 3.6 mm thick.
- > 6x Hexagon socket countersunk head screw M 12x150 (DIN 7991)
- > 12x nut M12
- > 6x washer M 12
- > 1x lock US 250
- > 1x latch
- > 6x compression spring
- > length of spacer rings: 2x L1 = 14mm, 2x L2 = 36 mm, 1x L3 = 12 mm, 1x L4 = 20 mm (132 mm)



One of the biggest advantages of this lock is the fact that it was manufactured for wide range of covers and you do not have to change its size or type. The lock can be installed on covers right at the cover manufacturer or on the ones that are already used. By assembling the lock system the cover does not lose its features and its certification.

We offer 5 year guarantee. This guarantee is based on both the tests we made on the lock and the materials used for its production. Body is made of deep-drawing steel with surface finishing resistant to corrosion in compliance with the standard ČSN EN ISO 9227. Locking mechanism is from steel with hardened surface, and is resistant to abrasion and corrosion. Complete functionality of the lock system is guaranteed by a special lubricant with anti-stretching formula.

US250 is protected as a Utility Model no. 18863.





Assembly offer for US 250 – TOKOZ a.s. company offers consulting and installation on company premises or at the specified location. In case of interest, we provide training for workers to be able to perform the installation by themselves (Possible to negotiate with order).



### 29132

## US 250 – Cover Type II

For cast-iron covers

- > 6x spacer ring – pipe PPR-PN ø 25/ 3.6 mm thick.
- > 6x Hexagon socket countersunk head screw M 12x110 (DIN 7991)
- > 12x nut M12
- > 6x washer M 12
- > 1x lock US 250
- > 1x latch
- > 6x compression spring
- > length of spacer rings: 4x L1 = 65 mm, 2x L2 = 72 mm (404 mm)



### 29133

## US 250 – Cover Type KASI

For cast-iron covers to BEGA frame

- > 8x spacer ring – pipe PPR-PN ø 25/ 3.6mm thick.
- > 8x screw M 12x220 (DIN 603)
- > 16x nut M12
- > 6x washer M 12
- > 2x lock US 250
- > 8x compression spring
- > length of spacer rings: 8x 145 mm



### 29134

## US 250 – Cover Type REXEL

For cast-iron covers with hinges

- > 4x spacer ring – pipe PPR-PN ø 25/ 3.6mm thick.
- > 4x Hexagon socket countersunk head screw M 12x110 (DIN 603)
- > 8x nut M12
- > 4x washer M 12
- > 1x lock US 250
- > 4x compression spring
- > length of spacer rings: 2x 41 mm, 2x 55 mm



# US 260 – Drain anchor



**Specially developed  
for securing drains, shafts  
and underground manholes**



**29150**

**US 260 – Security screw**

**29160**

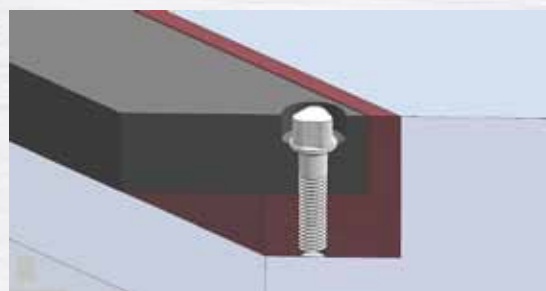
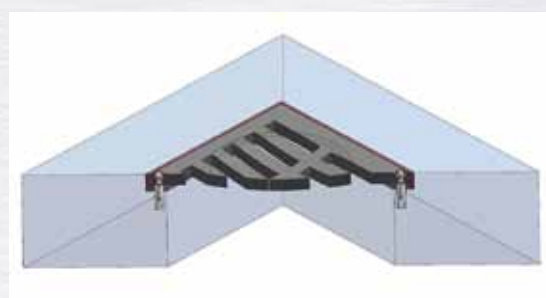
**US 260 – Security screw  
+ chemical anchor housing**

## **It solves the following problems:**

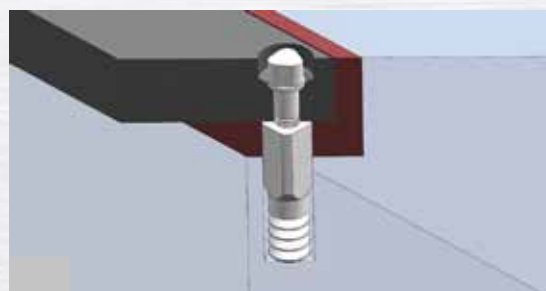
- > theft of the grates and other displays of vandalism
- > protecting people from falling into open shafts and cars from damaging
- > bumps of grates caused by regular traffic
- > reducing noisiness and banging while crossed by vehicles
- > prolongs lifespan of grates
- > providing comfortable access of authorized personnel even in freezing weather
- > reducing the need of police and service inspections of exposed or public sites

The installation of the anchor system does not impact drain grate properties, thus its potential certification is not affected. Anchor use does not depend on grate type or frame and forging in does not require dimension adjustment. The system can be used even with an already installed grate. The anchor system is controlled by a special key, individually manufactured for each user.

US 260 installation offer – TOKOZ a.s. company offers consulting and installation on company premises or at the specified location. In case of interest, we provide training for workers to be able to perform the installation by themselves. (Possible to negotiate with order).



Security screw



Security screw + chemical anchor housing



special key



# Security accumulator box

**We provide security  
even for accumulators  
of traffic light signalling**



**53401**

## Security box

### It solves the following problems:

- > protection of traffic light signalling accumulator against theft
- > reducing the number of service inspections in exposed sites

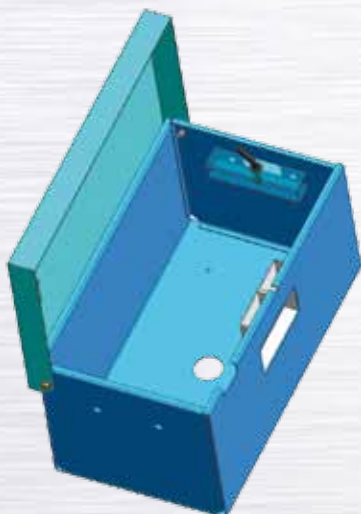
The entire product is made of 3 mm thick steel plate finished with heat zinc coating.

### Advantages:

- > base of the box equipped with an opening of  $\varnothing 70$  mm for a ground screw
- > opening for accumulator cables placed in the top part, covered by the edge of the lid
- > special construction of the box and padlock prevents the lid from lifting up even after a forcible hinge removal
- > removable handles for effortless transport of the box

Combining with other Tokoz products is recommended for complex security:

- > hardened steel chain of  $\varnothing 13$  mm and length of 1, 2, or 3 m
- > Gama 50 OS padlock



# Window spacers

## Security mechanisms for your windows

TOKOZ window spacers are intended for fixing the ventilation position of window wings with the possibility of locking in individual positions. The spacer secures window wings against undesirable opening from both interior and exterior during air ventilation. It is suitable for houses with little children where it prevents falling out of the window as well as for hospitals, schools and other institutions.

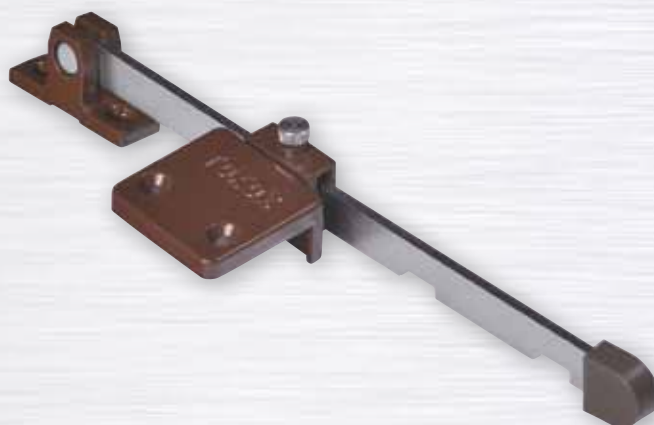
44303

Brown lockable window spacer



917108

Brown window spacer



917101

White window spacer



45201

White window spacer with safety catch



45203

Brown window spacer with safety catches







44301

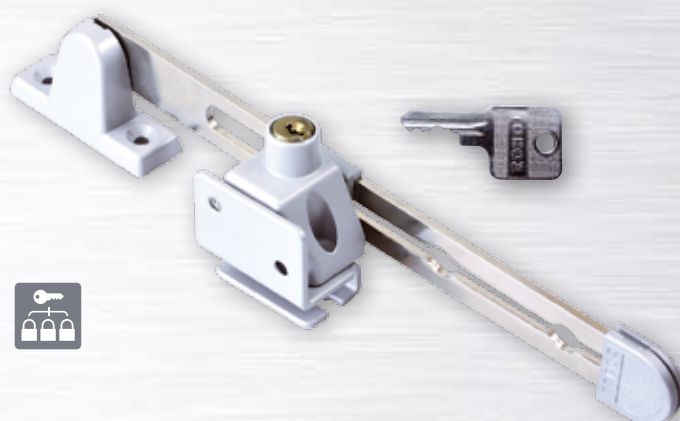
## White lockable window spacer



- > window spacer secures a window fixation with a setscrew
- > window spacer with a safety catch secures a window fixation with the turning of the safety catch
- > lockable window spacer secures a window fixation with a key (Keyed Alike system for spacers available)

44311

## Lockable window spacer for roof windows



- > lockable window spacer for roof windows secures a window fixation with a key (Keyed Alike system for spacers available on demand – suitable for roof windows, chimney manholes, lids, etc.)
- > rod housing and holder made of zinc alloy, powder varnished
- > surface of the steel rod is cemented and galvanized

	Window spacer	Window spacer with safety catch	Lockable window spacer	Lockable window spacer with for roof windows
Number of keys			2	2
Package of 1 piece/bulk	bag/box	plastic/box	plastic/box	bag/box
Number of pieces in a bulk package	25	6	6	10
Weight of bulk package in kg	3.10	2.00	2.00	3.70

# Road sign flange post

## City in Colours !

TOKOZ presents these unique colourful aluminium flange posts to assemble with traffic or other signs. They are applicable in everyday traffic as well as they can freshen up playgrounds, athletic stadiums, parks, pedestrian precinct and town squares.



10200

Flange Post DZ  
without surface finishing



10206

Flange Post DZ Green



10207

Flange Post DZ Red



10208

Flange Post DZ Yellow



10209

Flange Post DZ Black



10205

Anchoring material

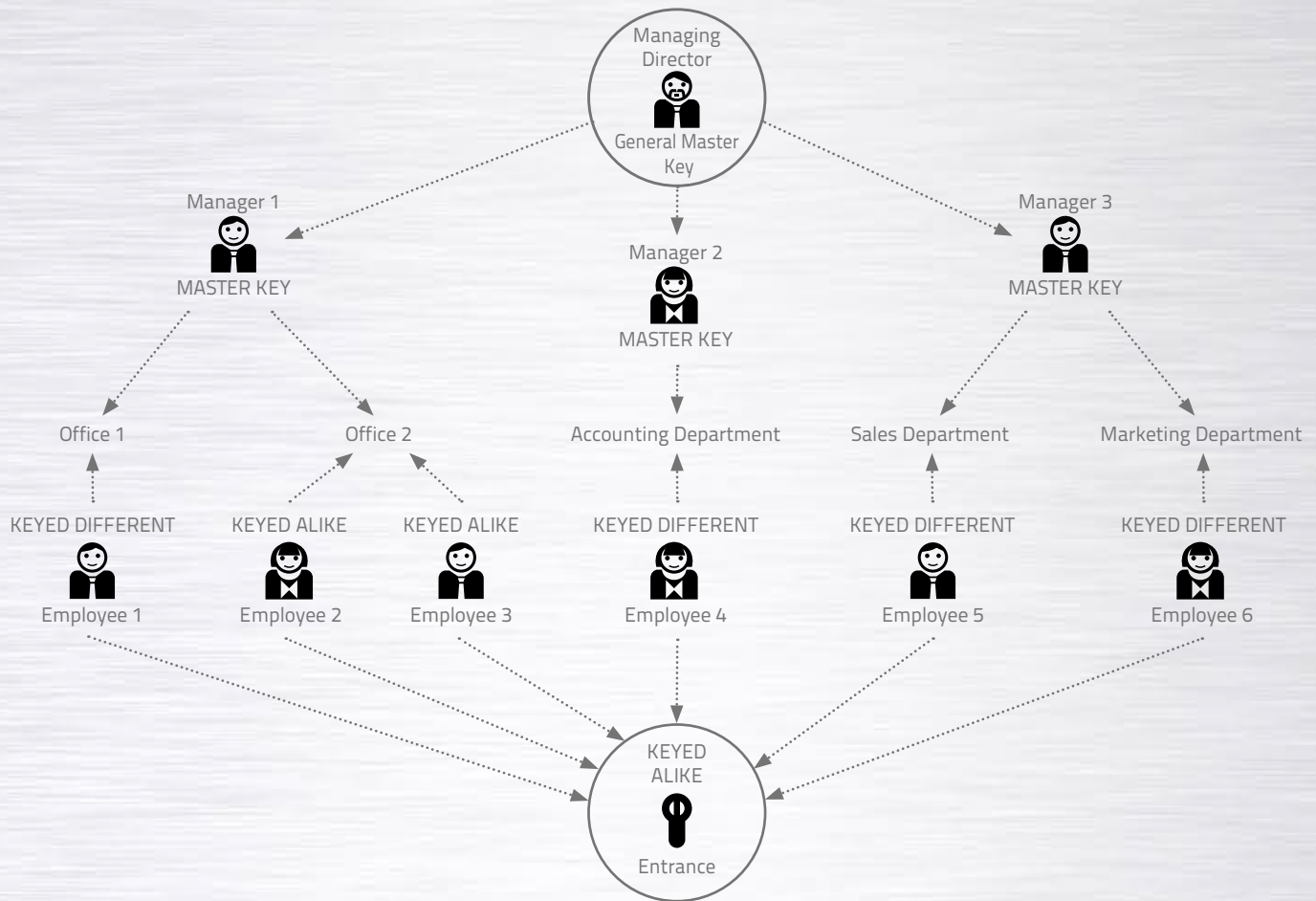


- > aluminium Flange posts are manufactured with a technology of pressure die casting, which guarantees long term lifespan and high resistance
- > modern design
- > aluminium alloy Traffic sign Flange Post is available both with and without surface finishing
- > varnished variants are in green, red, yellow or black

- > flange Post satisfies all technical requirements according to the European standard ČSN-EN 12899 -01 (Fixed, vertical road traffic signs - Part 1: Fixed signs)
- > flange is adjusted for column  $\varnothing$  60 mm
- > standard spacing of the opening for anchor screws – suitable for current road signs (anchoring with four anchor screws)



# Keyed systems



The purpose of locking systems is to create a functional system of superior and ordinary keys according to access rights, and thereby reduce the overall number of keys carried by individuals to a minimum.

**Selected TOKOZ products are manufactured to be fitting even into keyed systems of other brands. We supply them both with a lock cylinder (e.g. FAB, GUARD) and without, prepared to be attached by a locksmith. With this we wish to satisfy our customers and enable a single key unification of our padlocks and bars with their door cylinders.**

## Keyed Different system

Every lock has its proper key that cannot operate other locks.

## Keyed Alike system

More than one lock can be opened with the same key.

## Master Keyed system

All locks are keyed to a specific key that unlocks only the relevant lock. A relevant group of locks can be then opened with a Master key according to the access rights (e. g. employees have their own keys and their boss has a Master key that can unlock his/her own office and also offices of the employees but it will not unlock offices in other sectors).

## General Master Keyed system

One key operates all locks in the company. It is superior to Master keys. It is intended for the use of the owner of the company, security agency and fire brigade. It can also be placed within the company premises in a sealed safety box for emergency cases.

# SAFE COUNTRY

## SAFE COUNTRY PROJECT

The purpose of the Safe Country project is criminality prevention and protection of property and people in our country.

It joins together the members of Mechanical Lock Systems Association (CMZS-ČR), i.e. companies, corporations and self-employed persons providing products and services in the field of mechanical security, who have decided to unite and take action in order to create a 'safer' country, the Czech Republic.

The places of business as well as the products of members of the association may use the Safe Country marking. Tokoz, as a member of CMZS and a producer of security mechanisms, also takes part in the project. The company engages in active cooperation with other members and partners of the project.

[www.cmzs.cz](http://www.cmzs.cz)



## Partners of the project



Ministry of the interior of the Czech Republic



Chamber  
of Commerce



Police of the  
Czech Republic



Mechanical Lock  
Systems Association





## TOKOZ PRO

The TOKOZ PRO product line is built around the unique lock cylinder inspired by the lock mechanism of our padlocks. The basic concept of the lock mechanism has been made over into a structure applicable even to lock cylinders. Unification of locking mechanism of our products, integration into various keyed systems and interconnection with lock cylinders were the reasons for our decision to start producing lock cylinders.



## PADLOCKS

Within our range of products, we offer not only stars which have been on the market for decades, but also new, modern products fitting the present day exacting security demands. Vast majority of our products may be keyed alike, which brings further advantages in the form of lower number of keys needed to secure your property.



## BUILDING FITTINGS

The building fittings offer is focused on fittings for double paned wooden windows, which are still used in some of the houses or recreational buildings. Other products include special features for fittings, which not only enhance the window comfort when being operated, but may also serve as security measures.



## FURNITURE FITTINGS

In Furniture fittings, we still offer the typical TOKOZ products. Alongside the basic components, such as connecting fittings, various hangers, small hooks or magnetic catches, there are even specialties increasing the utility value of furniture.

### CERTIFIED SYSTEM OF QUALITY CONTROL



ISO/TS 16949:2009  
ISO 9001:2008  
ISO 14001  
ČSN OHSAS 18001  
Solvency certificate

**TOKOZ a.s.**  
Santiniho 20/26  
59102 Žďár nad Sázavou  
Czech Republic

tel. +420 566 802 111  
fax. +420 566 802 102  
e-mail: [mbox@tokoz.cz](mailto:mbox@tokoz.cz)

[WWW.TOKOZ.CZ](http://WWW.TOKOZ.CZ)