



Furniture fittings

Company profile



TOKOZ a.s. is a company working in the field of security mechanisms for more than 90 years. Thanks to years of experience we have become real experts on manufacturing of padlocks and today we are the biggest Czech producer in this field. We regularly diversify our permanent assortment and add new products that comply with present-day requirements and bring a specific solution.

WITH EVERY STEP WE MAKE, WE WANT TO KEEP CONTRIBUTING TO OUR GOOD REPUTATION OF A STRONG CZECH MANUFACTURER OF LOCKS AND FITTINGS

Ever since the beginning we have been engaged in production of various types of fittings. Now we have the fittings area divided into two main industries, the building industry and the furniture industry. The furniture hardware still offers typical TOKOZ products. Apart from the basic components such as connecting fittings, various hangers and hooks or magnet catches, we offer specialties that increase the furniture value of use.

YOU WILL APPRECIATE THE REAL CZECH QUALITY IN EVERYDAY USE.

Profile of use

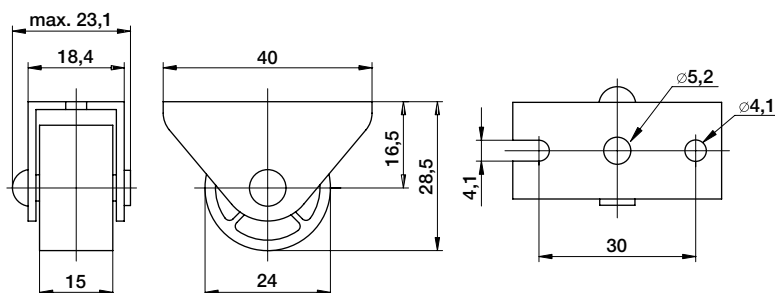


Furniture wheel

Furniture rigid castor, \varnothing 24 mm



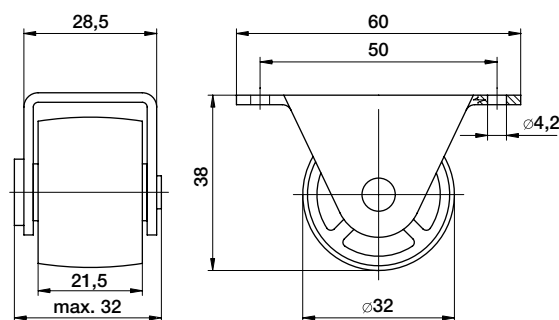
- » wheel – black plastic
- » brackets – steel-sheet stamping with galvanized surface finish
- » load capacity – 25 kg



Furniture rigid castor, \varnothing 32 mm



- » wheel – plastic, colour design
- » brackets – steel-sheet stamping with galvanized surface finish
- » load capacity – 40 kg



Product number	Name	Package (pcs)	Package weight (kg)
192301	Furniture rigid castor, \varnothing 24 mm	50	1,30
192310	Wheel 24 – black	100	0,85
192201	Furniture rigid castor, \varnothing 32 mm – ivory colour	50	3,05
192202	Furniture rigid castor, \varnothing 32 mm – brown	50	3,05

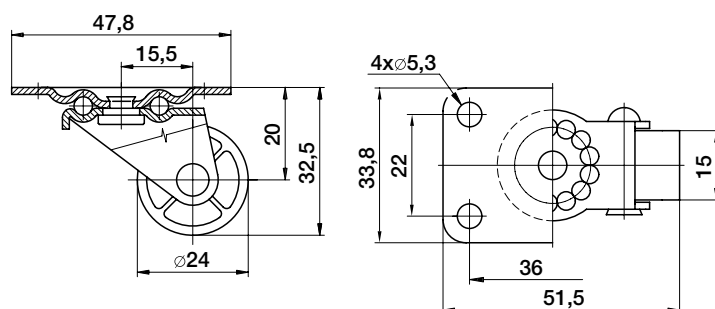
Other wheel types can be found in the TellureRota catalogue. TOKOZ a.s. has been representing the Italian Tellure Rota company on the Czech market for many years.

Furniture wheel

Furniture swivel caster, \varnothing 24 mm



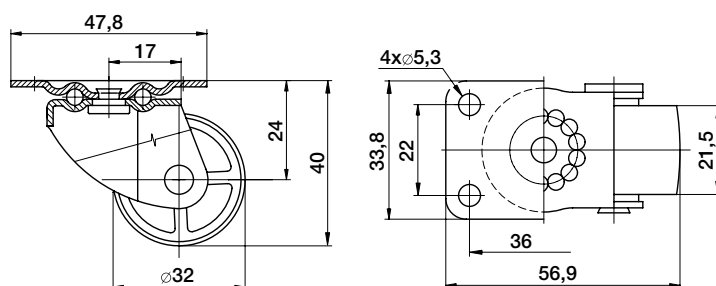
- » wheel – plastic, black
- » brackets – steel-sheet stamping with galvanized surface finish
- » single row bearing
- » load capacity – 10 kg



Furniture swivel caster, \varnothing 32 mm



- » wheel – plastic, colour desing
- » brackets – steel-sheet stamping with galvanized surface finish
- » single row bearing
- » load capacity – 20 kg



Product number	Name	Package (pcs)	Package weight (kg)
192401	Furniture swivel caster	50	2,20
192601	Furniture swivel caster, \varnothing 32 mm – ivory	25	1,85
192602	Furniture swivel caster, \varnothing 32 mm – brown	25	1,85

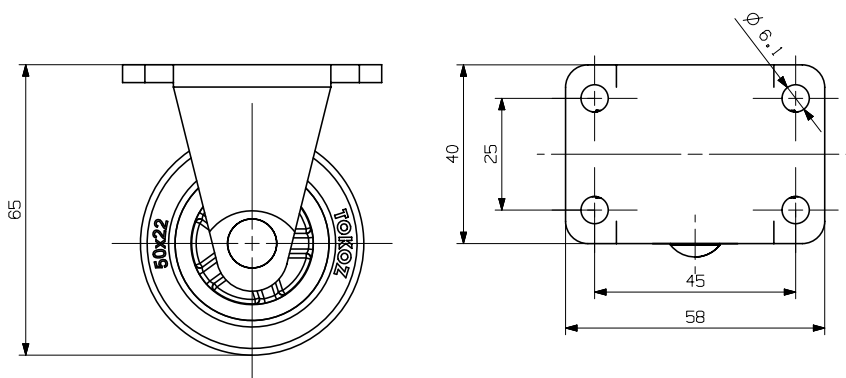
Other wheel types can be found in the TellureRota catalogue. TOKOZ a.s. has been representing the Italian Tellure Rota company on the Czech market for many years.

Standard wheel

Standard rigid wheel, \varnothing 50 mm



- » wheel tread – grey polyurethan
- » centre – plastic
- » brackets – steel-sheet stamping with galvanized surface finish
- » pairing wheel to all wheels with swivel casters \varnothing 50 mm
- » dynamic load capacity – 50 kg
- » static load capacity – 50 kg
- » tread hardness A 80 Shore



Product number	Name	Package (pcs)	Package weight (kg)
192101	Standard rigid wheel, \varnothing 50 mm	36	9,90

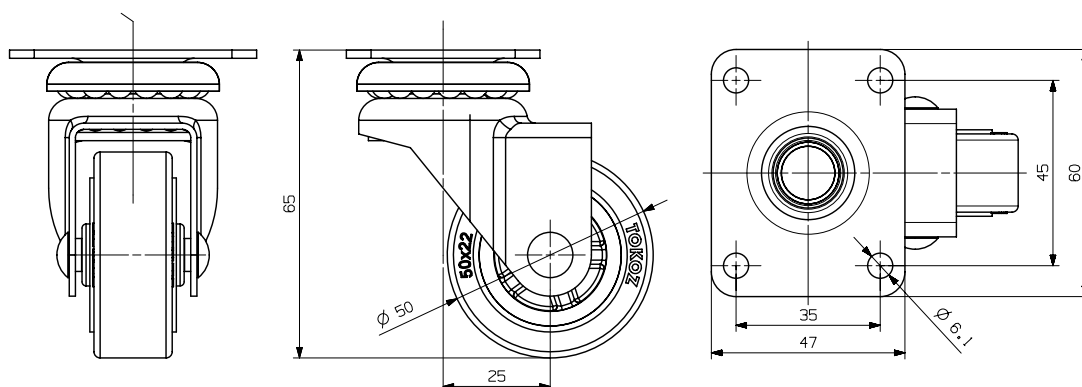
Other wheel types can be found in the TellureRota catalogue. TOKOZ a.s. has been representing the Italian Tellure Rota company on the Czech market for many years.

Standard wheel

Standard swivel wheel ø 50 mm with top plate



- » wheel tread – grey polyurethan
- » centre – plastic
- » brackets – steel-sheet stamping with galvanized surface finish
- » double bearing
- » dynamic load capacity – 50 kg
- » static load bearing – 50 kg
- » tread hardness A 80 Shore



Product number	Name	Package (pcs)	Package weight (kg)
81801	Standard swivel wheel ø 50 mm with top plate brackets	36	9,90

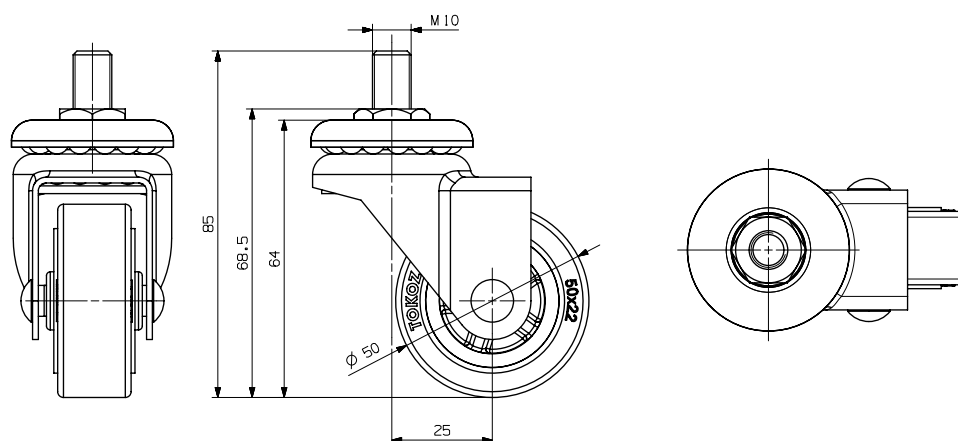
Other wheel types can be found in the TellureRota catalogue. TOKOZ a.s. has been representing the Italian Tellure Rota company on the Czech market for many years.

Standard wheel

Standard swivel wheel ø 50 mm with stem



- » wheel tread – grey polyurethan
- » centre – plastic
- » brackets – steel-sheet stamping with galvanized surface finish
- » double bearing
- » dynamic load capacity – 50 kg
- » static load bearing – 50 kg
- » tread hardness A 80 Shore



Product number	Name	Package (pcs)	Package weight (kg)
81601	Standard swivel wheel ø 50 mm with stem	36	9,10

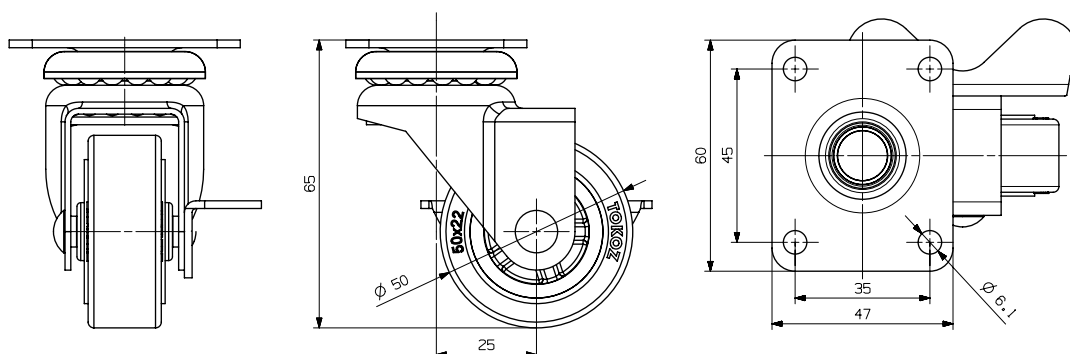
Other wheel types can be found in the TellureRota catalogue. TOKOZ a.s. has been representing the Italian Tellure Rota company on the Czech market for many years.

Standard wheel



Standard swivel wheel \varnothing 50 mm with top plate and brake

- » wheel tread – grey polyurethan
- » centre – plastic
- » brackets – steel-sheet stamping with galvanized surface finish
- » double bearing
- » the brake is placed in the centre of the wheel
- » dynamic load capacity – 50 kg
- » static load bearing – 50 kg
- » tread hardness A 80 Shore



Product number	Name	Package (pcs)	Package weight (kg)
84901	Standard swivel wheel \varnothing 50 mm with top plate and brake	36	13,14

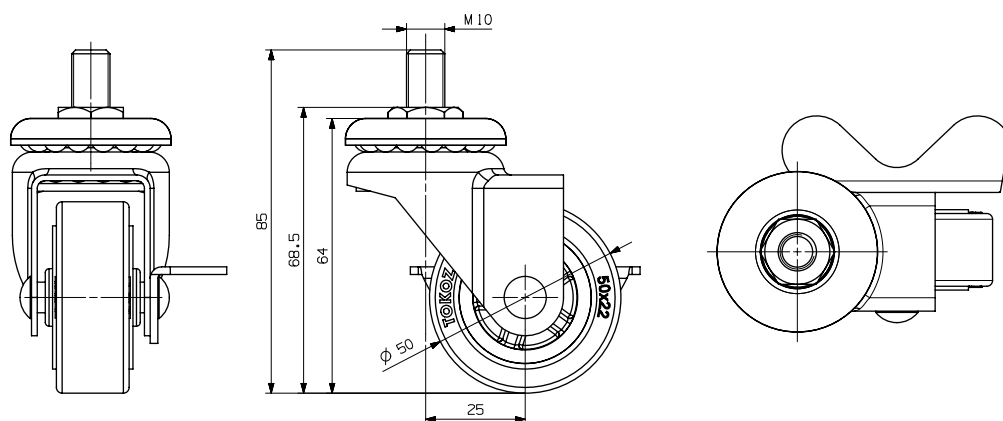
Other wheel types can be found in the TellureRota catalogue. TOKOZ a.s. has been representing the Italian Tellure Rota company on the Czech market for many years.

Standard wheel

Standard swivel wheel ø 50 mm with stem and brake



- » wheel tread – grey polyurethan
- » centre – plastic
- » brackets – steel-sheet stamping with galvanized surface finish
- » double bearing
- » the brake is placed in the centre of the wheel
- » dynamic load capacity – 50 kg
- » static load bearing – 50 kg
- » tread hardness A 80 Shore



Product number	Name	Package (pcs)	Package weight (kg)
84701	Standard swivel wheel ø 50 mm with top plate and brake	36	12,36

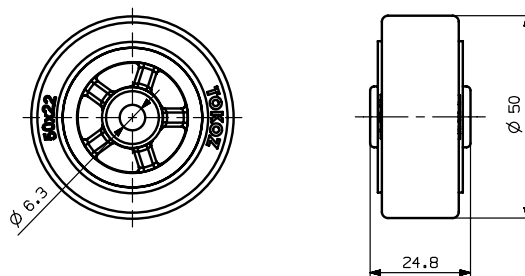
Other wheel types can be found in the TellureRota catalogue. TOKOZ a.s. has been representing the Italian Tellure Rota company on the Czech market for many years.

Wheels



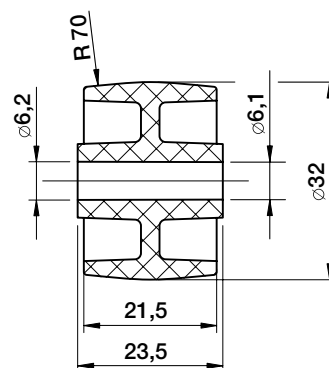
Wheel \varnothing 50 mm

- » wheel tread – polyurethan, hardness A 80 Shore, grey
- » centre – plastic, white
- » load capacity 50 kg



Wheel \varnothing 32 mm

- » plastic
- » colour design – brown, ivory
- » load capacity 40 kg



Product number	Name	Package (pcs)	Package weight (kg)
192110	Wheel \varnothing 50 mm	60	2,88
192203	Wheel \varnothing 32 mm – ivory	50	0,60
192204	Wheel \varnothing 32 mm – brown	50	0,60

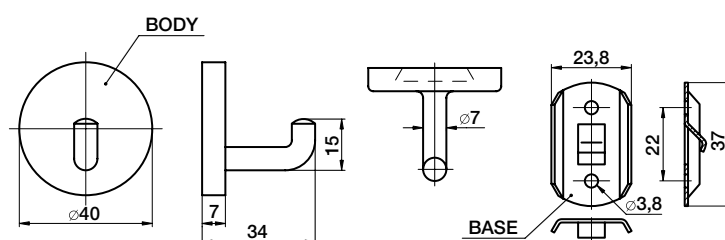
Other wheel types can be found in the TellureRota catalogue. TOKOZ a.s. has been representing the Italian Tellure Rota company on the Czech market for many years.

Metal wall hanger

Metal wall hanger – with a hook



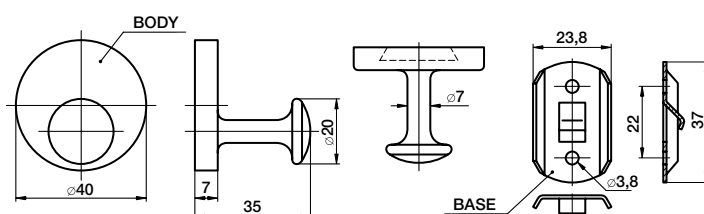
- » zinc alloy casting
- » assembly by sliding onto the support plate fixed to the wall by screws
- » screws are covered, the hook can be pulled out – easy maintenance
- » high load capacity is achieved by firm fastening of the hanger to the wall
- » powder coat surface finish
- » load capacity – 50 kg



Metal wall hanger – knob \varnothing 20 mm



- » zinc alloy moulding
- » assembly by sliding onto the support plate fixed to the wall by screws
- » screws are covered, the knob can be pulled out – easy maintenance
- » high load capacity is achieved by firm fastening of the hanger to the wall
- » powder coat surface finish
- » load capacity – 50 kg



Product number	Name	Package (pcs)	Package weight (kg)
196101	Metal wall hanger – hook, white	20	1,05
196102	Metal wall hanger – hook, brown	20	1,05
196409	Metal wall hanger – knob \varnothing 20, white	20	1,15
196410	Metal wall hanger – knob \varnothing 20, brown	20	1,15

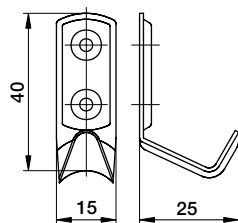
Other colour options according to customer wishes possible for orders for more than 200 pieces.

Metal wall hanger



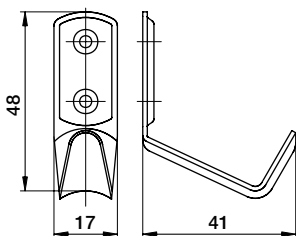
Metal wall hanger – stainless steel

- » to be screwed onto the wall, high load capacity
- » steel sheet stamping
- » without screws (screws 3 mm in diameter recommended)



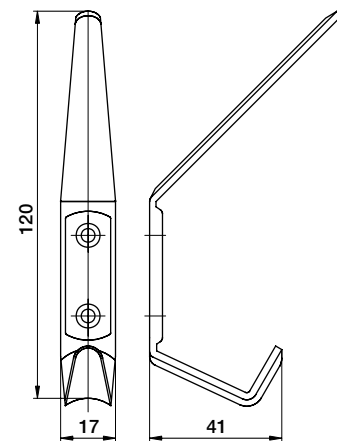
Large metal wall hanger – stainless steel

- » to be screwed onto the wall, high load capacity
- » steel sheet stamping
- » without screws (screws 3 mm in diameter recommended)



Metal wall hanger with hat peg – stainless steel

- » for screwing onto the wall, high load capacity
- » steel sheet stamping
- » without screws (screws 4 mm in diameter recommended)

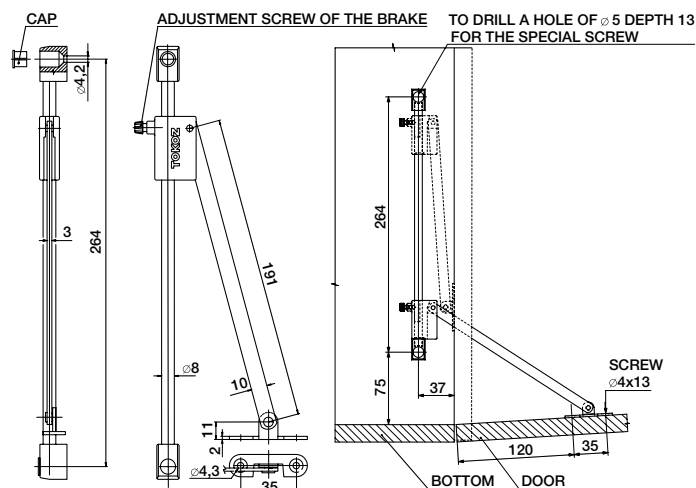


Product number	Name	Package (pcs)	Package weight (kg)
197101	Metal wall hanger – stainless steel	100	0,80
197201	Large metal wall hanger – stainless steel	100	1,35
197801	Metal wall hanger with hat pe – stainless steel	50	2,10
197803	Metal wall hanger with hat pe – stainless steel, 4x 25 screws – 4 pcs	2 in a blister pack	0,10

Drop down cabinet flap stay with brake

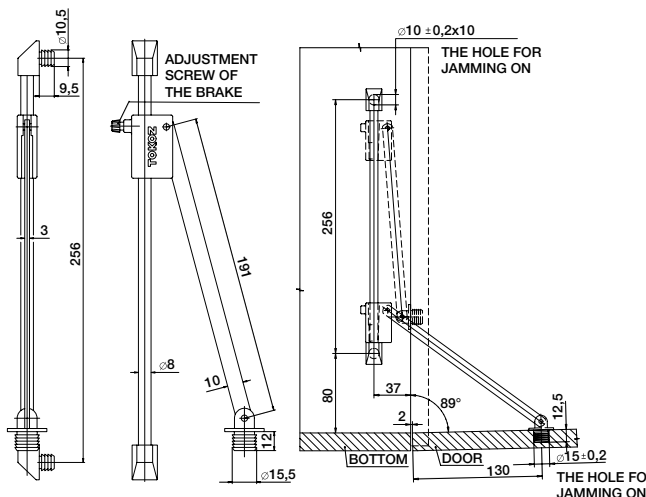
Drop Down Cabinet flap stay with brake – NK 466

- » provides the stopping movement of furniture tilt doors and their maintaining in the opened position
- » electroplated surface finish
- » suitable in combination with the NK 522 cabinet flap hinge
- » assembly with screws (recommended 4x13 screws)



Drop Down Cabinet flap stay with brake – NK 460

- » provides the stopping movement of furniture tilt doors and their maintaining in the opened position
- » electroplated surface finish
- » suitable in combination with the NK 522 cabinet flap hinge
- » assembly without screws – by jamming (for dimensions of the holes see pictures below)

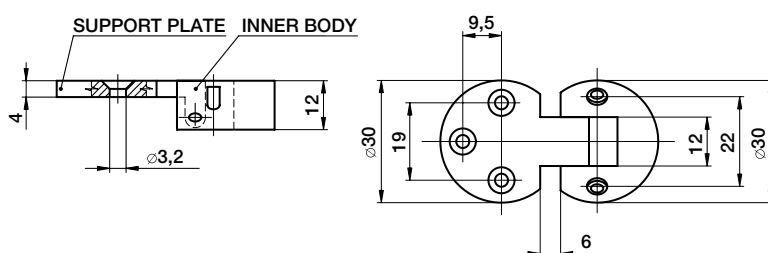


Product number	Name	Package (pcs)	Package weight (kg)
199101	Drop Down Cabinet flap stay with brake – NK 466	10 pairs	3,65
198001	Drop Down Cabinet flap stay with brake – NK 460	20	3,50

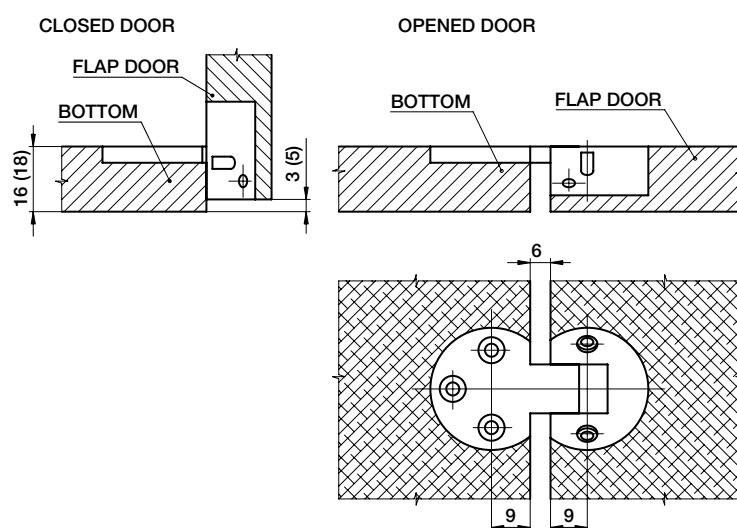
Cabinet flap hinge – NK 522

Cabinet flap hinge – NK 522

- » body – plastic
- » supporting plate – zinc alloy casting
- » 90° opening angle
- » suitable in combination with the NK 460 and NK 466 drop down cabinet flap stay with brake
- » example of use – a cabinet flap in a wall unit



FORGING – IN SCHEME



Product number	Name	Package (pcs)	Package weight (kg)
142101	Cabinet flap hinge – NK 522	100	2,15
142103	Cabinet flap hinge – NK 522	2 in a packet	0,04

Flanged hinge

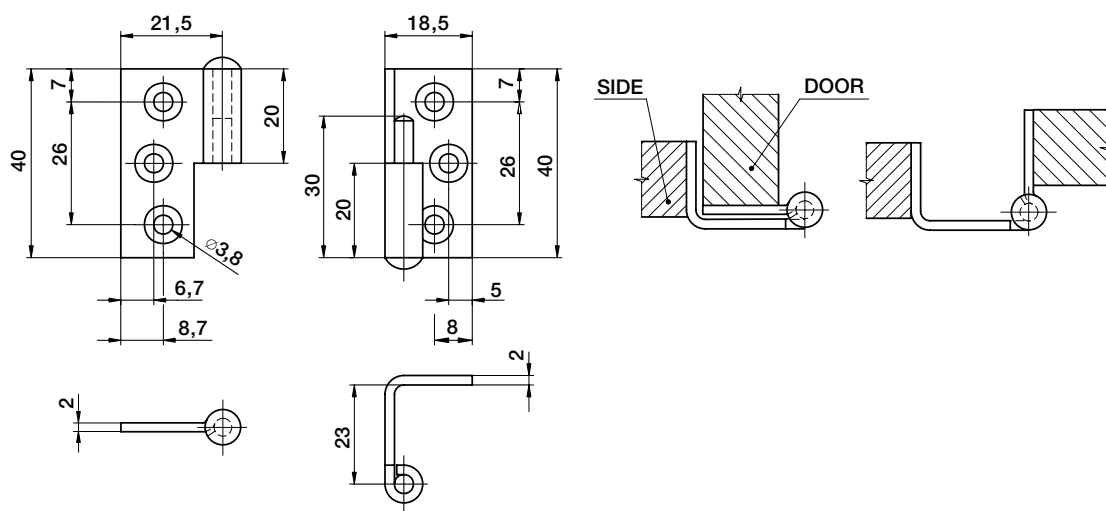
NK 125/16 left-flanged hinge

- » steel take-apart hinge for furniture doors
- » minimum thickness of doors and cabinet sides is 16 mm
- » electroplated finish



NK 125/16 right-flanged hinge

- » steel take-apart hinge for mounted furniture doors
- » minimum thickness of doors and cabinet sides is 16 mm
- » electroplated finish



Product number	Name	Package (pcs)	Package weight (kg)
139701	NK 125/16 left-flanged hinge	50	2,50
139801	NK 125/16 right-flanged hinge	50	2,50
139703	NK 125/16 left-flanged hinge, screws 3,5 x 16 – 12 pcs	2 in a packet	0,10
139803	NK 125/16 right-flanged hinge, screws 3,5 x 16 – 12 pcs	2 in a packet	0,10

Butt hinge

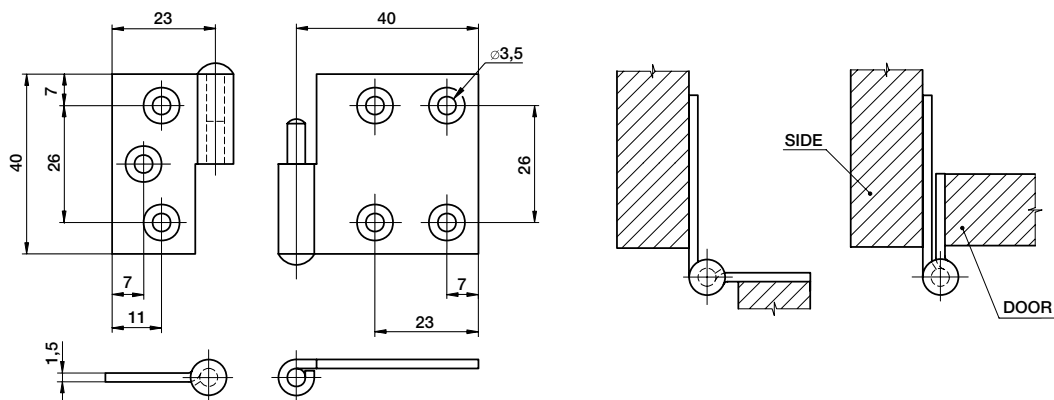
NK 550 left butt hinge

- » steel take-apart hinge for connecting the door and the side of the cabinet
- » electroplated surface finish



NK 550 right butt hinge

- » steel take-apart hinge for connecting the door and the side of the cabinet
- » electroplated surface finish

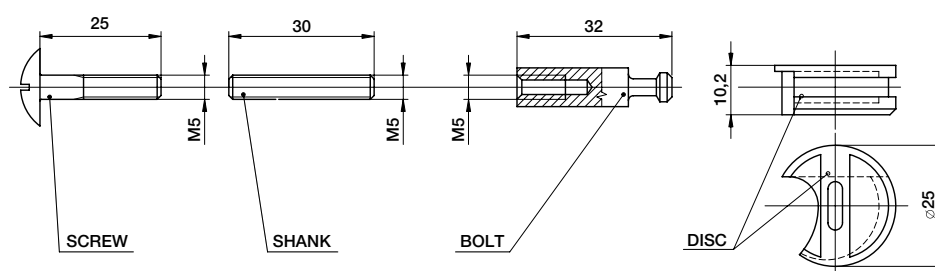
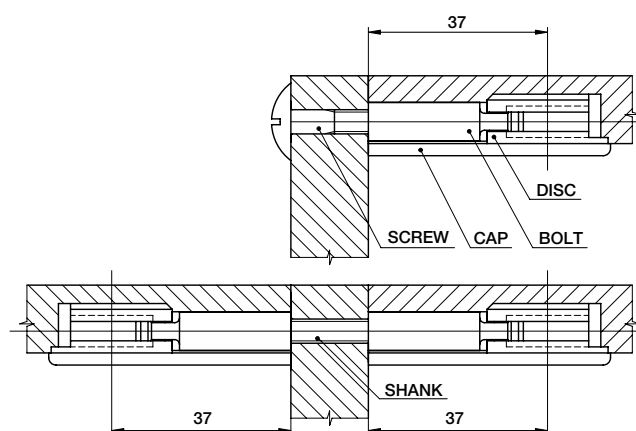


Product number	Name	Package (pcs)	Package weight (kg)
139301	NK 550 left butt hinge	50	1,95
139401	NK 550 right butt hinge	50	1,95
139302	NK 550 left butt hinge, screws 3x 16 – 14 ks	2 in a packet	0,10
139402	NK 550 left butt hinge, screws 3x 16 – 14 ks	2 in a packet	0,10

Connecting fittings

Connecting fittings XIV

- » for angular connection of dismountable furniture parts
- » minimum thickness of the connected parts is 16 mm
- » can be supplemented by caps from our offer
- » the package (190403) includes a disc, a bolt and a threaded shank (the screw needs to be ordered separately)
- » tightened up by turning of the disc

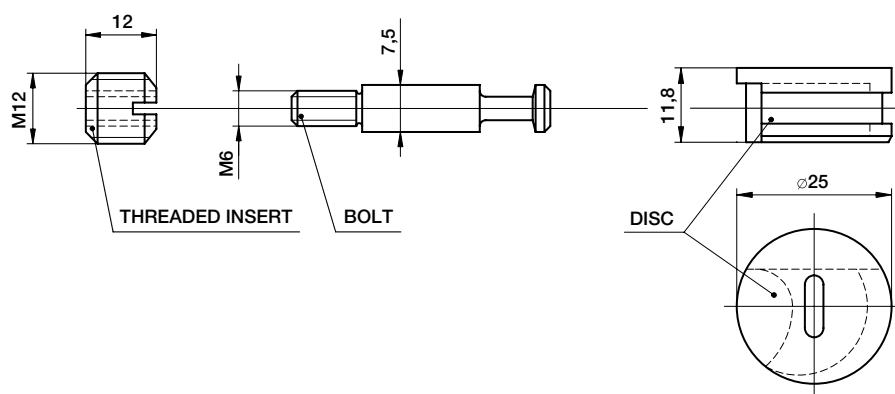
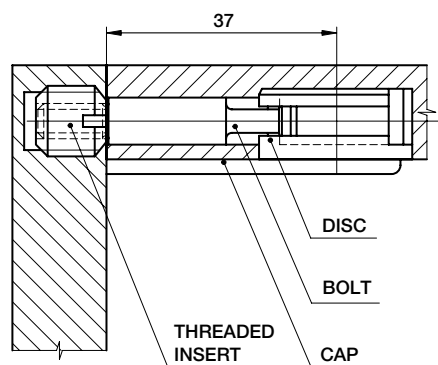


Product number	Name	Package (pcs)	Package weight (kg)
190403	Connecting fittings XIV – without cap	100	2,05
193602	Screw M5 x 25	50	1,20
193701	Shank M5 x 30	50	1,80
190305	Connecting fittings XIV – bolt	200	1,50

Connecting fittings

Connecting fittings I

- » for angular connection of dismountable furniture parts
- » minimum thickness of the connected parts is 18 mm
- » can be supplemented by caps from our offer
- » tightened up by turning of the disc

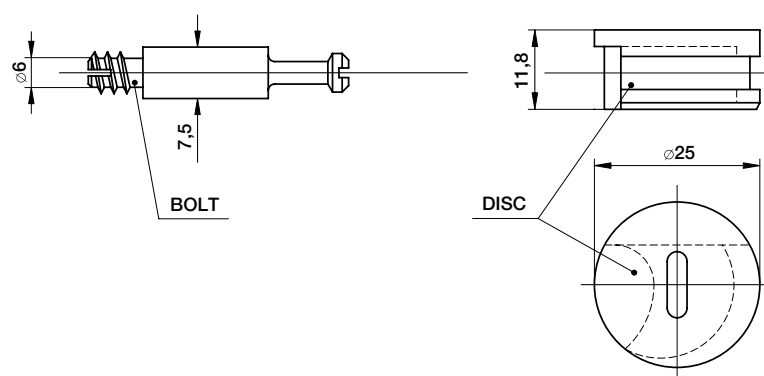
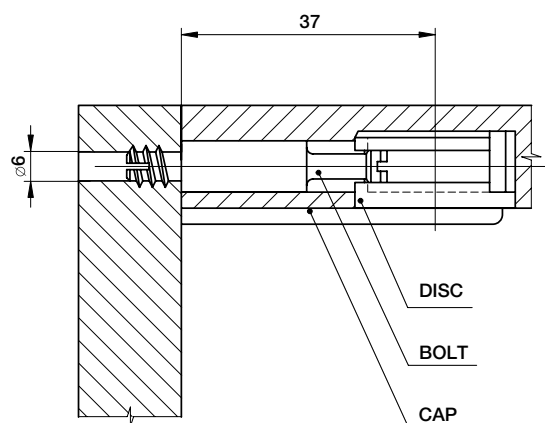


Product number	Name	Package (pcs)	Package weight (kg)
194105	Connecting fittings I – without cap	100	3,15

Connecting fittings

Connecting fittings IX

- » for angular connection of dismountable furniture parts
- » minimum thickness of the connected parts is 18 mm
- » can be supplemented by caps from our offer
- » bolt with a self-tapping thread
- » tightened up by turning of the disc

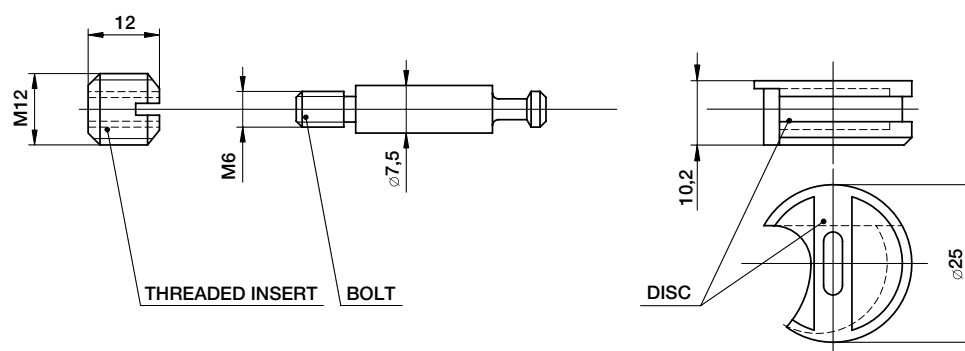
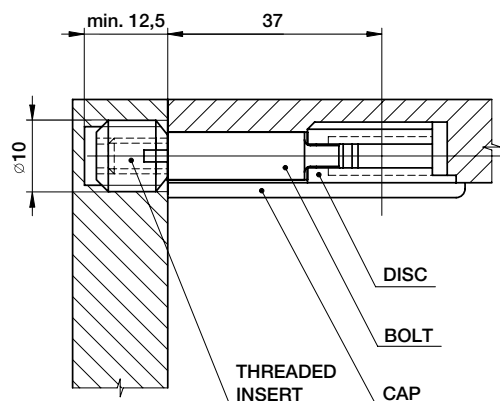


Product number	Name	Package (pcs)	Package weight (kg)
195003	Connecting fittings IX – without cap	100	2,85

Connecting fittings

Connecting fittings XIII

- » for angular connection of dismountable furniture parts
- » minimum thickness of the connected parts is 16 mm
- » can be supplemented by caps from our offer
- » tightened up by turning of the disc

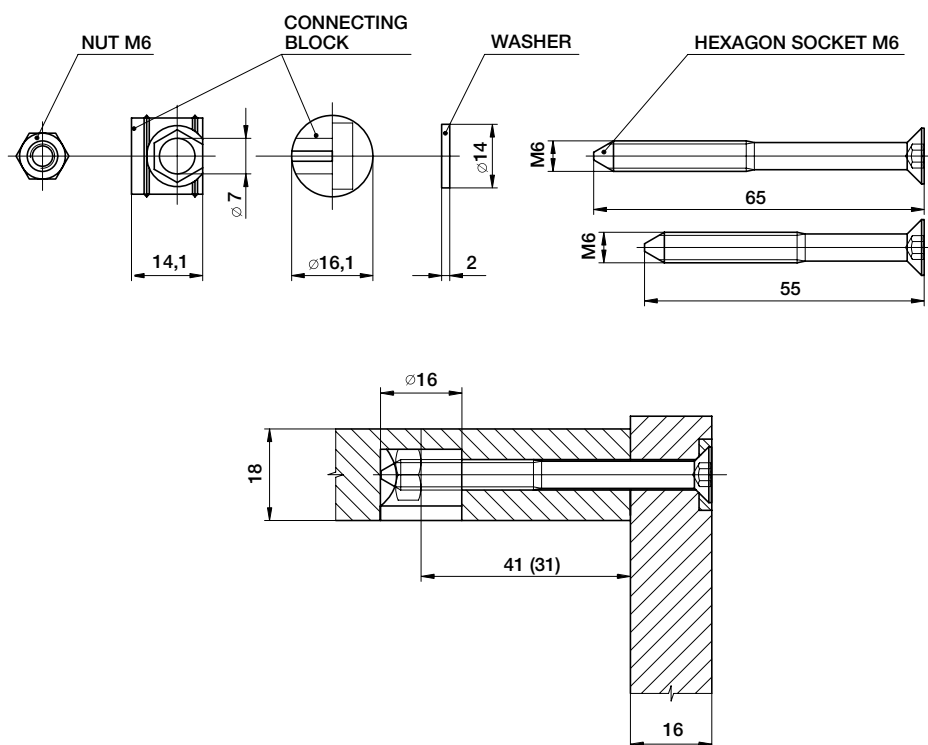


Product number	Name	Package (pcs)	Package weight (kg)
190103	Connecting fittings XIII – without cap	100	2,55

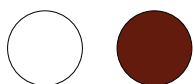
Connecting fittings

Connecting fittings X

- » for angular connection of dismountable furniture parts
- » used for furniture constructions with an increased requirement for connection strength
- » minimum thickness of the connected parts is 18 mm
- » screws 55 or 65 mm long



Colour options

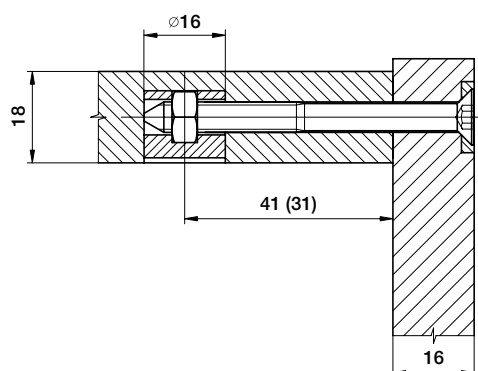
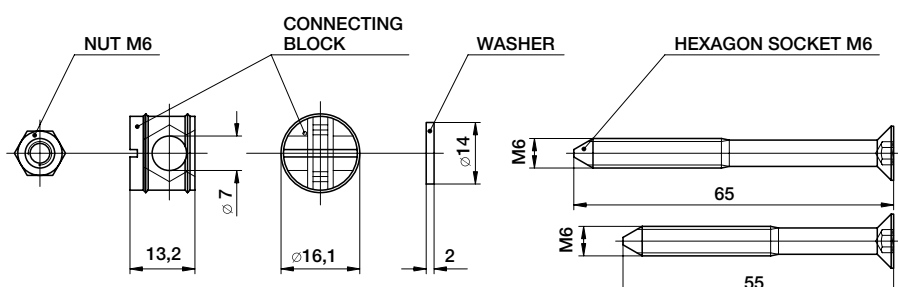


Product number	Name	Package (pcs)	Package weight (kg)
191606	Connecting fittings X/55 – brown	200	3,25
191607	Connecting fittings X/65 – white	200	3,50

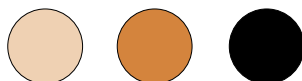
Connecting fittings

Connecting fittings XA

- » for angular connection of dismountable furniture parts
- » used for furniture constructions with a higher requirement for connection strength
- » fully fixed nut in the plastic block enables an easy assembly
- » minimum thickness of the connected parts is 16 mm
- » screws 55 or 65 mm long



Colour options



Product number	Name	Package (pcs)	Package weight (kg)
191809	Connecting fittings XA ,SOCKET HEAD 55 – black	200	3,15
191810	Connecting fittings XA, SOCKET HEAD 65 – black	200	3,40
191823	Connecting fittings XA 55 – black	200	3,25
191822	Connecting block – beige	500	1,95
191825	Connecting block – orange	500	2,00

Spare parts for connecting fittings

Spare parts for connecting fittings



» Threaded insert, Al



» Hexagonal Socket head M6 x 55



» Disc I, II, IX



» Disc XIII, XIV



» Bolt I



» Bolt XIII



» Bolt XIV



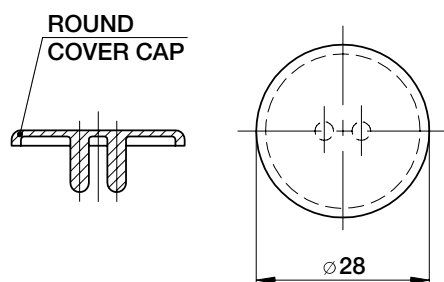
» Socket head M6 x 65

Product number	Name	Package (pcs)	Package weight (kg)
194104	Threaded insert Al	100	0,65
194406	Disc I, II, IX	200	3,65
190104	Disc XIII, XIV	200	2,60
194109	Bolt I	200	2,20
190105	Bolt XIII	200	2,15
190305	Bolt XIV	200	2,05
191803	Connecting threaded insert. XA	500	0,70
191812	Hexagonal socket head screw M6 x 65	200	2,45
191811	Hexagonal socket head screw M6 x 55	200	2,20
191604	Screw M6 x 65	300	3,60
191608	Hexagonal socket head screw M6 x 55 blue Zn	300	3,20
191609	Hexagonal socket head screw M6 x 55 yellow Zn	300	3,20

Cover caps for connecting fittings

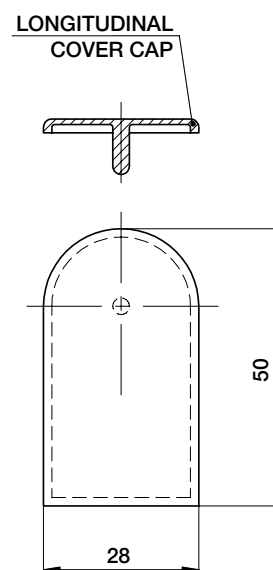
Round cover cap

- » plastic
- » covers TOKOZ connecting fittings of furniture parts
- » colour options



Longitudinal cover

- » plastic
- » covers TOKOZ connecting fittings of furniture parts
- » colour options

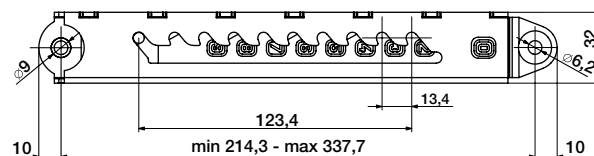
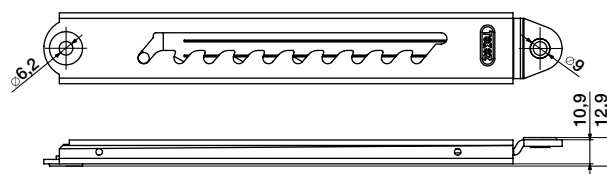


Product number	Name	Package (pcs)	Package weight (kg)
194113	Round cover – snow white	100	0,20
194106	Round cover – ivory	100	0,20
194108	Round cover – black	100	0,20
195006	Longitudinal cover – black	100	0,30

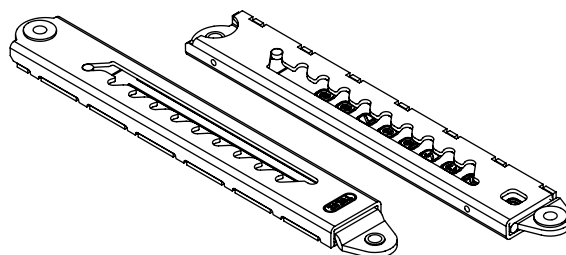
Telescopic ratchet fitting

Telescopic ratchet fitting

- » steel stamping
- » easy to use
- » possible to set at 10 different positions
- » suitable for setting positions of furniture parts, ventilation windows etc.
- » the maximum static load capacity in the telescopic ratchet fitting axis is 200 kg
- » yellow zinc surface finish



THE MAXIMUM STATIC LOAD CAPACITY
IN THE HEIGHT ADJUSTER AXIS IS 200 kg

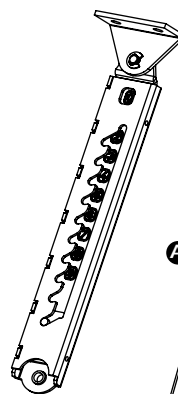
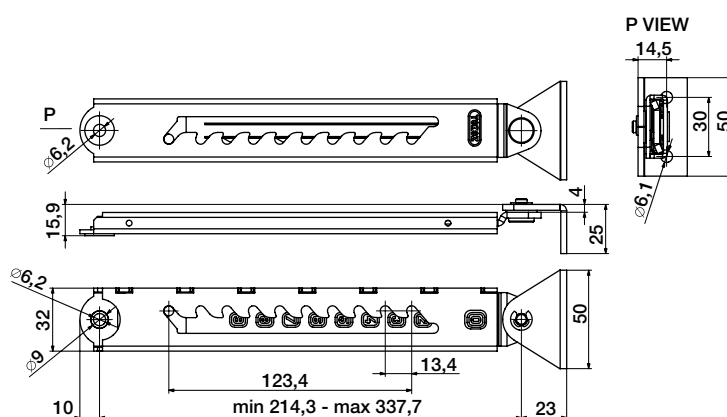


Product number	Name	Package (pcs)	Package weight (kg)
82401	Telescopic ratchet fitting	1 in a blister pack	0,30
82402	Telescopic ratchet fitting	30	9,95

Telescopic ratchet fitting with an angular plate

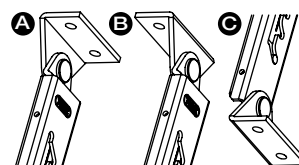
Telescopic ratchet fitting with an angular plate

- » steel stamping
- » easy manipulation
- » possible to set at 10 different positions
- » suitable for setting positions of furniture parts, ventilation windows etc.
- » the maximum static load capacity in the height adjuster axis is 200 kg
- » yellow zinc surface finish



THE MAXIMUM STATIC LOAD CAPACITY
IN THE HEIGHT ADJUSTER AXIS IS 200 kg

Variety of different ways of attaching
the angular plate to the height adjuster



Product number	Name	Package (pcs)	Package weight (kg)
83901	Telescopic ratchet fitting with an angular plate	20	7,80

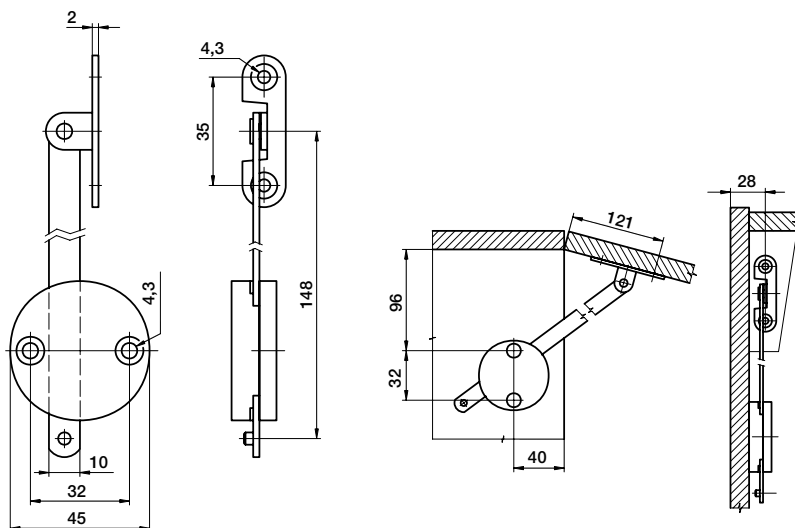
Furniture flap stay

NK 462 furniture flap stay, right

- » steel stamping, plastic element
- » the stay is used for upwards-tilting furniture flaps and for keeping them in this position
- » the door is released with a slight lift
- » assembly using screws (screws 4 mm in diameter recommended)

NK 462 furniture flap stay, left

- » steel stamping, plastic element
- » the stay is used for upwards-tilting furniture flaps and for keeping them in this position
- » the door is released with a slight lift
- » assembly using screws (screws 4 mm in diameter recommended)

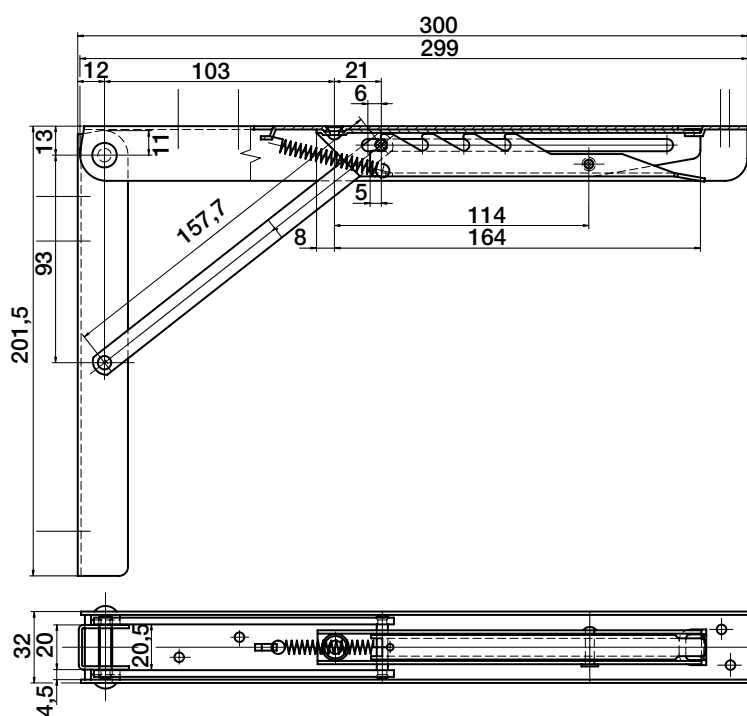


Product number	Name	Package (pcs)	Package weight (kg)
198303	NK 462 furniture flap stay, right	40	2,50
198305	NK 462 furniture flap stay, left	40	2,50

Adjustable bracket

Adjustable bracket

- » steel stamping
- » can be set to 5 positions
- » high lifespan and reliability
- » maximum weight of the load when the arm is in the half-way position is 100 kg
- » suitable for positioning of shelves, tables and benches, etc.
- » surface finish – electroplated, powder coated
- » the package includes connecting fittings

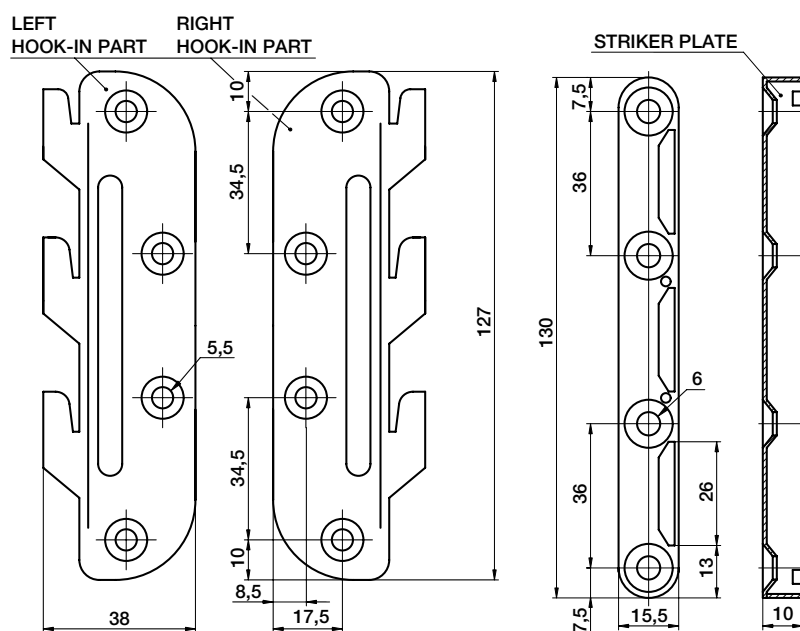


Product number	Name	Package (pcs)	Package weight (kg)
84101	Adjustable bracket, white	1 in a blister pack	0,70
84102	Adjustable bracket, galvanized	1 in a blister pack	0,70
84105	Adjustable bracket, brown	1 in a blister pack	0,70
84103	Adjustable bracket, white	6 in a box	3,95
84104	Adjustable bracket, galvanized	6 in a box	3,95
84106	Adjustable bracket, brown	6 in a box	3,95

Bed fittings

Bed fittings

- » classic design
- » steel stamping
- » provides demountable connection of bed parts
- » right and left design
- » electroplated surface finish

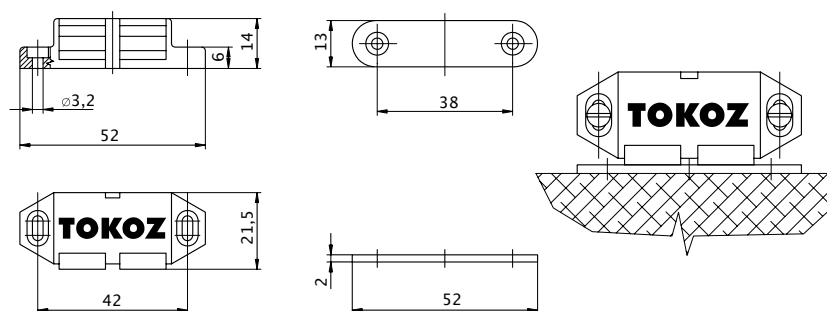
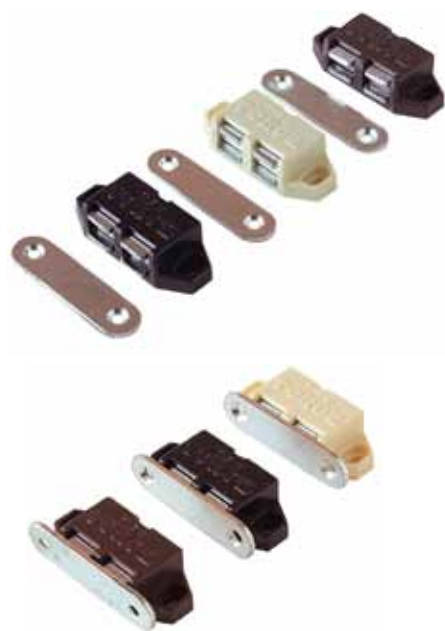


Product number	Name	Package (pcs)	Package weight (kg)
190508	Bed fittings – set	10	3,05
190507	Bed fittings – striker plate	150	5,40
190505	Bed fittings – right hook-in part	150	5,95
190506	Bed fittings – left hook-in part	150	5,95

Magnetic catch

Magnetic catch

- » consists of ferrite magnet, steel extension, plastic housing
- » keeps furniture doors in the closed position
- » its design allows for a gap adjustment between the catch and the door of the furniture parts
- » colour options
- » TOKOZ quality – stable magnetic force



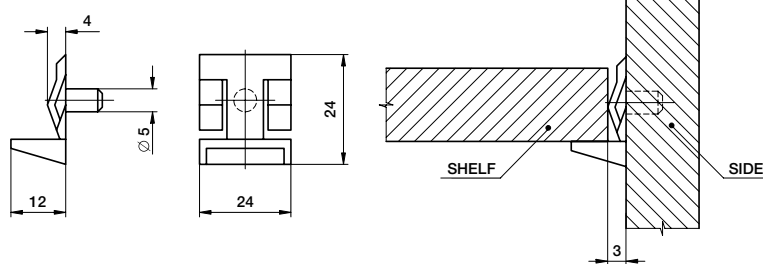
Product number	Name	Package (pcs)	Package weight (kg)
190716	Magnet catch, black	100	3,45
190728	Magnet catch, black	250	8,40
190723	Magnet catch, black , screws 3x 12 – 8 pcs	2 in a packet	0,90
190733	Magnet catch, black without counterplate	250	8,40
190703	Magnet catch, brown	100	3,45
190727	Magnet catch, brown	250	8,40
190722	Magnet catch, brown , screws 3x 12 – 8 pcs	2 in a packet	0,90
190732	Magnet catch, brown, without counterplate	250	8,40
190701	Magnet catch, ivory	100	3,45
190726	Magnet catch, ivory	250	8,40
190720	Magnet catch, ivory , screws 3x 12 – 8 pcs	2 in a packet	0,90
190731	Magnet catch, ivory, without counterplate	250	8,40
190718	Magnet catch magnet	1080	11,20
190707	Magnet catch, counterplate	200	1,50
190740	Magnet catch, counterplate without finishing	200	1,50

Shelf support

Shelf support



Shelf support with ingate

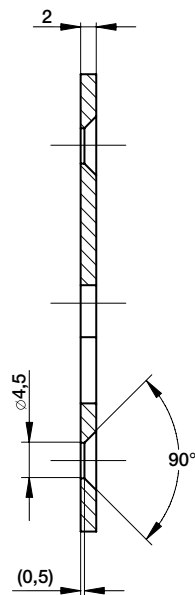
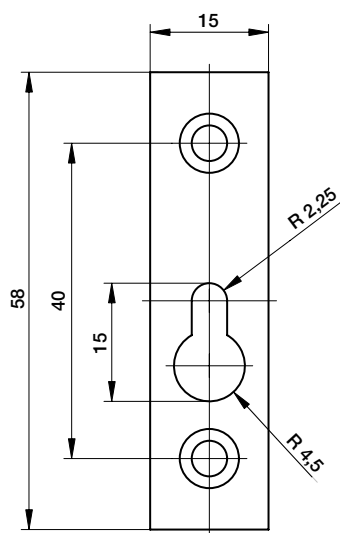


Product number	Name	Package (pcs)	Package weight (kg)
197609	Shelf support without ingate, white	100	0,25
197601	Shelf support without ingate, white	5000	9,05
197606	Shelf support without ingate, white	10 in a packet	0,03
197610	Shelf support without ingate, black	100	0,25
197603	Shelf support without ingate, black	5000	9,50
197608	Shelf support without ingate, black	10 in a packet	0,03
197604	Shelf support without ingate, brown	100	0,25
197602	Shelf support without ingate, brown	5000	9,05
197607	Shelf support without ingate, brown	10 in a packet	0,03
197704	Shelf support with ingate, white	100	0,30
197701	Shelf support with ingate, white	2000	4,90
197706	Shelf support with ingate, black	100	0,30
197703	Shelf support with ingate, black	2000	8,40
197705	Shelf support with ingate, brown	100	4,90
197702	Shelf support with ingate, brown	2000	4,90

Mounting plate

Mounting plate

- » steel sheet stamping
- » is used for hanging up furniture parts
- » electroplated

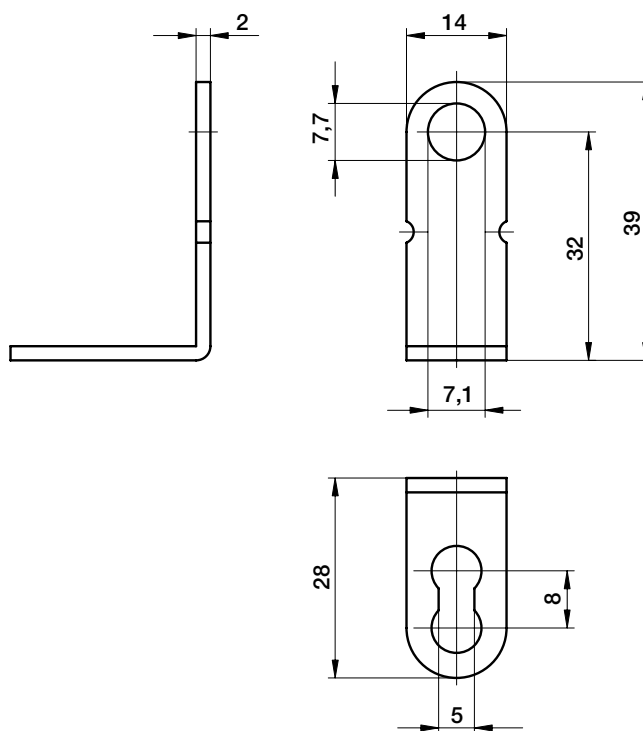


Product number	Name	Package (pcs)	Package weight (kg)
80001	Mounting plate	200	2,35

Angle bracket

Angle bracket

- » steel sheet stamping
- » used for fastening of back sides of furniture parts or for firm fastening of shelves
- » electroplated and powder painted



Product number	Name	Package (pcs)	Package weight (kg)
186110	Angle bracket, white	300	3,50
186109	Angle bracket, black	300	3,50
186101	Angle bracket, brown	300	3,50
186105	Angle bracket, galvanized	300	3,50



TOKOZ PRO

The TOKOZ PRO product line is built around the unique lock cylinder inspired by the lock mechanism of our padlocks. The basic concept of the lock mechanism has been made over into a structure applicable even to lock cylinders. Unification of locking mechanism of our products, integration into various keyed systems and interconnection with lock cylinders were the reasons for our decision to start producing lock cylinders.



PADLOCKS

Within our range of products, we offer not only stars which have been on the market for decades, but also new, modern products fitting the present day exacting security demands. Vast majority of our products may be keyed alike, which brings further advantages in the form of lower number of keys needed to secure your property.



SECURITY MECHANISM

We have diversified our permanent assortment and added security mechanisms and accessories. Therefore, the products that you can find in our current offer involve not only time-proven and still irreplaceable TOKOZ products but also new mechanisms that have been adapted to present-day security needs, plus they provide specific solutions.



BUILDING FITTINGS

The building fittings offer is focused on fittings for double paned wooden windows, which are still used in some of the houses or recreational buildings. Other products include special features for fittings, which not only enhance the window comfort when being operated, but may also serve as security measures.

CERTIFIED SYSTEM OF QUALITY CONTROL



ISO/TS 16949:2009
ISO 9001:2008
ISO 14001
ČSN OHSAS 18001
Solvency certificate

TOKOZ a.s.
Santiniho 20/26
59102 Žďár nad Sázavou
Czech Republic

tel. +420 566 802 111
fax. +420 566 802 102
e-mail: mbox@tokoz.cz

WWW.TOKOZ.CZ